

Midori

Considered one of the top Japanese restaurants in Portugal, offers a wide and innovative selection of sushi, sushi, sashimi, tempura e teppan yaki, within a genuine Oriental atmosphere
Open from Tuesday to Saturday, dinner only

assaMassa

The main Restaurant of the Hotel, offers the perfect combination of aromas, flavors and colors of the typical Portuguese cuisine along with a gourmet touch.
Its private Wine Cellar features more than 500 references of the finest Portuguese and Worldwide productions.

RC Bar

Here one can enjoy a late breakfast or a light meal, daily from 10 am until late in the evening.
The experience of a glass of vintage Port and a fine Cuban Cigar or a simple drink at the end of the day

Serra Bar

Located by the pool, it's open daily from 10 am until sunset throughout the Summer time. Offers a Menu to please all ages, with salads, pizzas, snacks, ice creams and specialties from the Grill.

Tcha

Located in the Hotel lobby, one can enjoy the afternoon tea and wide variety of refreshing drinks within a comfortable and relaxing atmosphere.

Hole in One

Located at the Golf Club House it's open from 7.30 am to 8 pm. Overlooking a magnificent scenery, one can taste a light meal and a wide variety of drinks.



Fact Sheet

Address	Telephone	Fax
Estrada da Lagoa Azul, Linhó, 2714-511 Sintra - Portugal	+ 351 21 924 90 11	+ 351 21 924 90 07

Email	Web site
resort@penhalonga.com	www.penhalonga.com www.ritzcarlton.com

Location

In Sintra, a World Heritage site, occupying 220 hectares (545 acres) only 25 minutes from Lisbon International Airport and 10 minutes from the Estoril Coast.

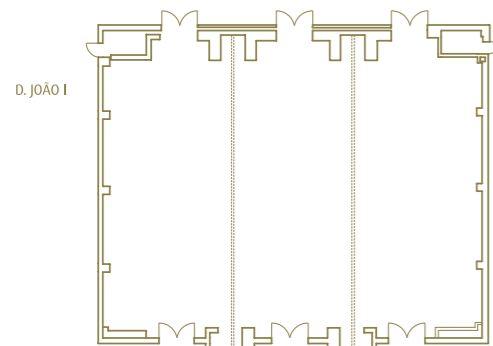
Accommodation

194 guest rooms with picture windows and terraces offering panoramic views over the golf courses, bath with separate shower, honor bar, Nespresso, coffee machines, 24-hours in room dining, room-safe, Bose Ipod docking system, satellite television, internet connection and telephone with voicemail .

- 113 Superior Rooms (42m²/452f² + balcony 8m²/86f²)
- 37 Club Rooms (42m²/452f² + balcony 8m²/86f²)
- 27 Junior Suites (50m²/536f² + terrace 10m²/107,6f²)
- 14 Executive Suites (90m²/968,4f² + balcony 22m²/236,72f²)
- 2 Presidential Suites (132m²/1420,32f² + balcony 22m²/236,72f² + 8m²/86f²)
- 1 Imperial Suite (346m²/3722f² + 2 balconies x 16m²/172,16f² + terrace 37m²/398,12f²)

OTHER SERVICES

- Business Center; Wireless in the public areas; Concierge; Shopping gallery
- Rental car service; Airport limousine service
- Laundry service; Outside Catering; Kids Club; Babysitting service on request
- Health club with indoor and outdoor pools and a gymnasium
- 6 Tennis Courts; Horses; Bicycles and Jogging tracks,
- The Six Senses Spa with 1500 sqm, including 9 treatment rooms and a garden with: Jacuzzi, a contrast pool, a platform for the practice of Yoga e Chi Kung and 2 gazebos for meditation and treatments such as Shiatsu.

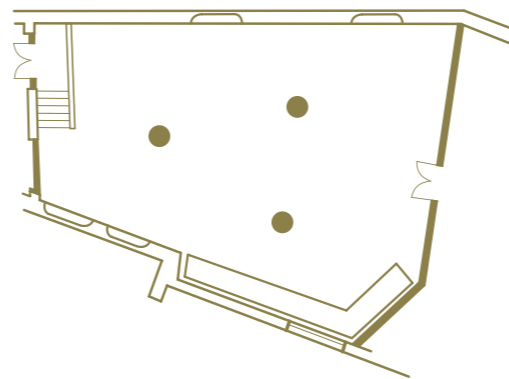


D. JOÃO I

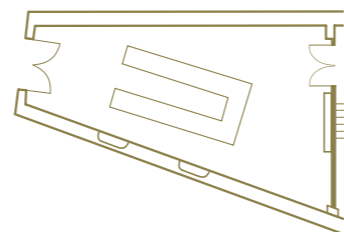
D. JOÃO II

D. JOÃO III

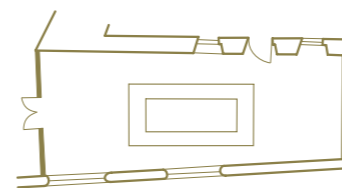
D. JOÃO IV



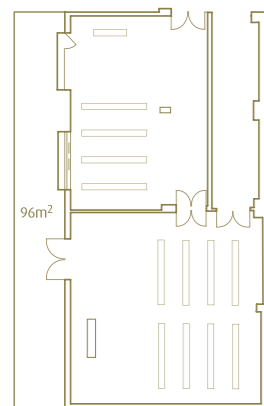
VISCONDESSA II



VISCONDESSA III

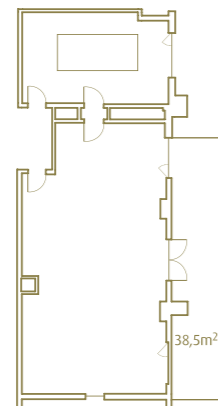


VISCONDESSA I



COROA II

D. MANUEL



D. SEBASTIÃO

D.ª LEONOR

38,5m²

D.ª FILIPA

COROA I

	F ² Surface	M ² Surface	Lenght	Width	Height	Daylight	Theater	School Type	U-shape	Menu	Cocktail
--	---------------------------	---------------------------	--------	-------	--------	----------	---------	-------------	---------	------	----------

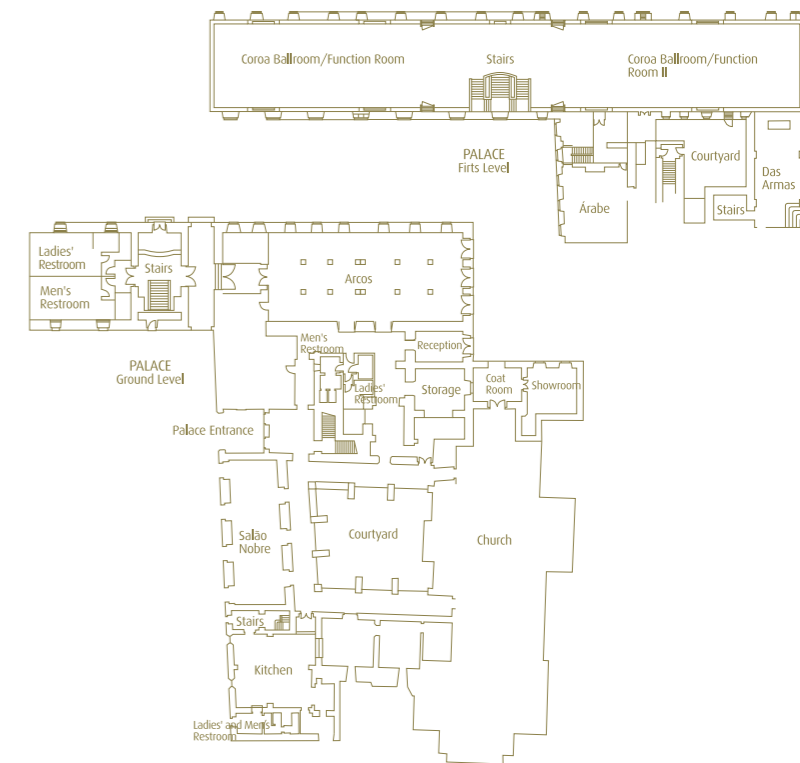
D. João I	2996	278	19.6	14.2	3.9	No	290	180	60	200 180	300
D. João II or IV	1098	102	7.2	14.2	3.9	No	100	72	40	80 60	100
D. João II + III	1895	176	12.5	14.2	3.9	No	170	90	48	120 90	200
D. João III + IV	1895	176	12.5	14.2	3.9	No	170	90	48	120 90	200
D. Manuel	473	44.1	7.8	5.2	2.7	Yes	25	15	15	-	30
D. Leonor	638	59.3	7.7	7.7	2.7	Yes	60	33	27	40	60
D. Sebastião	228	21.2	5.6	3.8	2.7	Yes	-	-	-	-	-
D. Filipa	638	59.3	10.6	5.6	2.7	Yes	60	30	25	36	60

	F ² Surface	M ² Surface	Lenght	Width	Height	Daylight	Theater	School Type	U-shape	Menu	Cocktail
--	---------------------------	---------------------------	--------	-------	--------	----------	---------	-------------	---------	------	----------

Viscondessa I	890	82.7	15.6	5.3	3.2	Yes	100	54	33	70 50	60
Viscondessa II	2172	201.8	17.4	44.6	3.2	Yes	120	70	34	130 100	120
Viscondessa III	452	42	12	3.5	3.2	Yes	35	24	21	30 30	30

Air Conditioned rooms with facilities for telephone, internet connection, fax and computer connections.

Notes



	F ² Surface	M ² Surface	Lenght	Width	Height	Daylight	Theater	Classroom	U-shape	Dinner	Cocktail
--	---------------------------	---------------------------	--------	-------	--------	----------	---------	-----------	---------	--------	----------

Sala Coroa - All	7374	685	68.5	10	3.9	Yes	-	-	-	570/470	540
Sala Coroa I (Arcos Side)	2960	275	27.5	10	3.9	Yes	330	216	84	270/220	300
Sala Coroa II (Golf Side)	2637	245	24	10	3.9	Yes	270	192	72	240/190	240
Sala Dos Arcos	2368	220	22	10	3.9	Yes	-	-	-	180/140	180
Salão Nobre	969	90	16.6	5.5	8	Yes	96	60	40	70/50	60
Sala Árabe	603	56	8	7	3.2	Yes	60	36	27	50/40	50
Sala Das Armas	484	45	9	5	5	Yes	40	36	21	30 / -	30
Sala Inf. D. Luis	710	66	10.90	6.10	3.2	Yes	90	30	30	70/60	50
Sala Condes De Monsanto	581	54	8.60	6.30	3.2	Yes	67	33	18	30/30	30
Salas Castro (x 6)	236	22	5.10	4.45	3.2	Yes	24	-	9	-	-