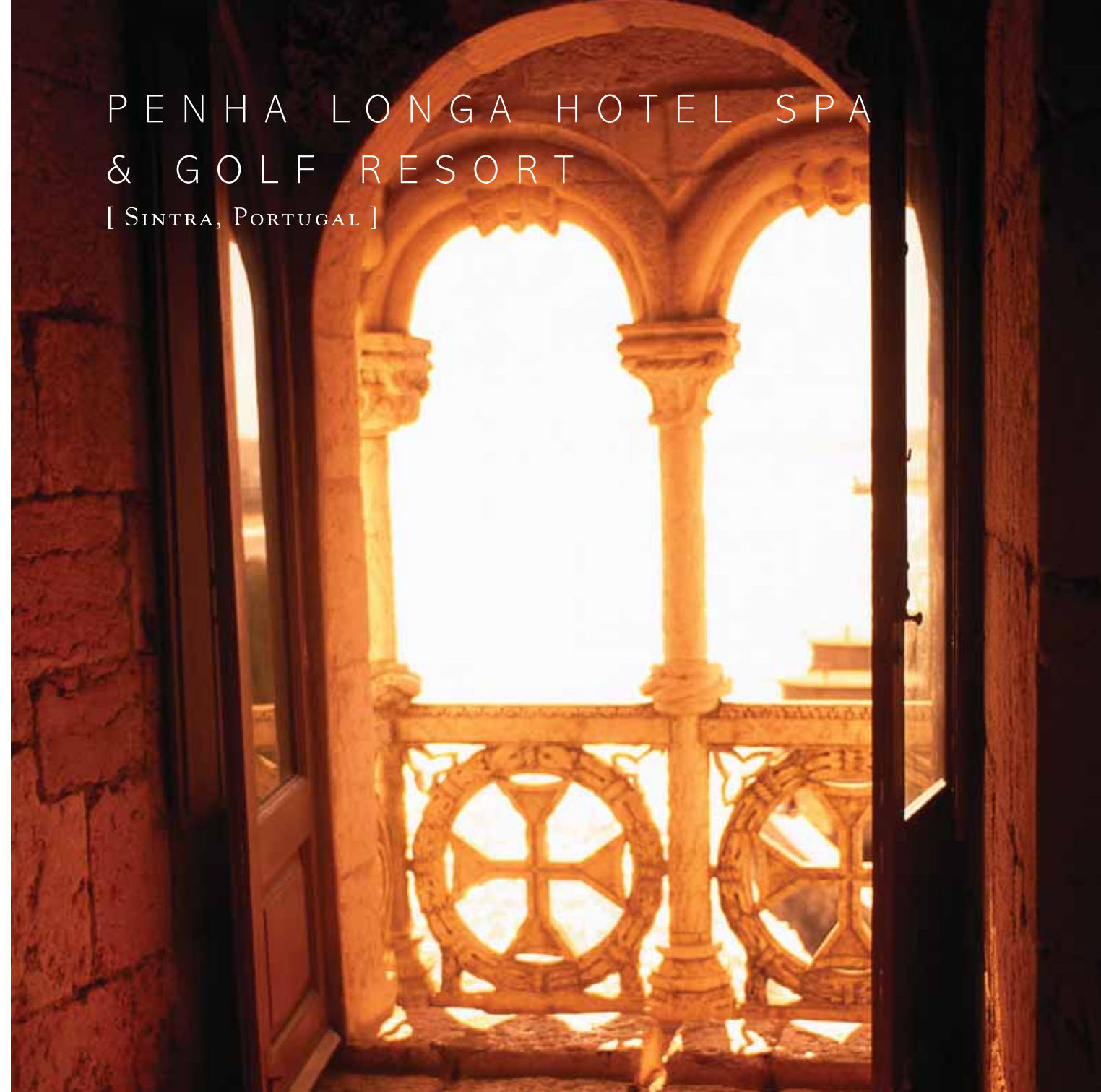




PENHA LONGA HOTEL SPA
& GOLF RESORT
[SINTRA, PORTUGAL]



ARRIVE

Immortalized as the most beautiful place in all of Europe, the verdant Portuguese hills near Sintra provide a fairytale haven for relaxation and rejuvenation. In the 16th century, kings and noblemen built exquisite summer palaces here. Happily, one of the most stunning examples of palatial Golden Age romanticism now serves as the centerpiece for the 500-acre Penha Longa Hotel Spa & Golf Resort. Today visitors from the world over come to be treated like royalty and enjoy an unmatched combination of natural beauty, gentle climate and casual elegance.





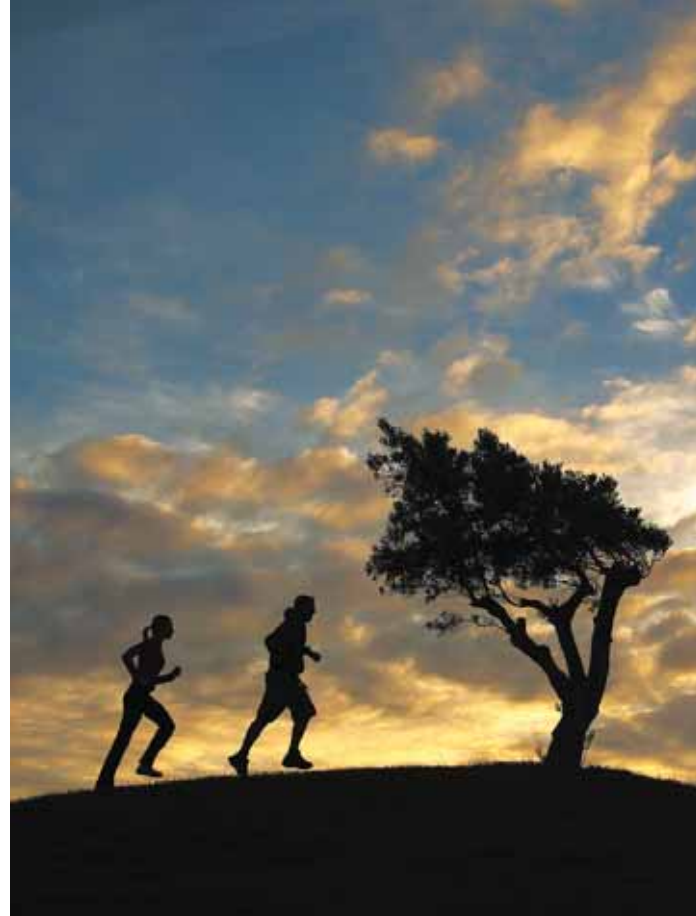
P L A Y

Near beautiful Atlantic Ocean beaches, nestled in the misty outcroppings of the Sintra-Cascais forests, Penha Longa complements nature with a wonderful array of recreational amenities. In addition to 27 holes of championship golf, leisure options include indoor and outdoor pools, tennis courts, jogging tracks, squash and horseback riding. Guests also enjoy a world-renowned spa and fully equipped health club. For the younger set, the resort offers a special area for children's activities and a supervised Kids Club program.

REST

A terrace with outdoor seating and a picture window view of breathtaking countryside are found in each of the resort's 194 guest rooms. Accommodations include 150 superior guest rooms, 27 junior suites, 14 executive suites, two presidential suites and one imperial suite. All are appointed with thoughtful amenities ranging from large marble bathrooms to high-speed Internet access and NESPRESSO coffee machines. And in the finest tradition, impeccable personalized service ensures each guest exceptional hospitality.





REJUVENATE

Within the resort's historical Palace complex, a world-class Six Senses Spa offers a tempting array of therapies, beauty treatments and services for the body, mind and spirit. The luxurious 1,500-square-meter/16,145-square-foot haven invokes the ultimate in relaxing tranquility. Here, knowledgeable technicians blend exclusive formulations and world-renown products to bring a sense of well-being back to life. An idyllic garden featuring meditation and treatment gazebos, a Jacuzzi, plunge pool and a beautiful water cascade feature complete the spa experience.

N O U R I S H

Dining at Penha Longa is a sensational occasion, with five irresistible restaurants catering to every taste and style. At renowned assaMassa, authentic Portuguese flavors are served with a twist of global sophistication. Japanese fare and exquisite décor are blended for a distinctive presentation at Midori Restaurant. Spectacular views of the first and 18th holes are enjoyed at Hole in One Bar, while fresh seafood and an inspired open-grill counter highlight poolside dining at the casual Serra. At day's end, guests retreat to the garden setting of the RC Bar for vintage wines and fine cigars.





GATHER

From intimate weddings to galas for hundreds of guests, festivities at Penha Longa always blossom into gracious memories. The resort offers 2,118 square meters/22,798 square feet of meeting space, both within the hotel and in the stunning 16th century Palace. Business conferences succeed brilliantly in ideal rooms equipped with a full array of high-technology conveniences. In the estate's magnificent ballroom, up to 700 guests are accommodated in a setting where regal ambiance and architecture have been preserved for modern enjoyment. Generous amenities and sophisticated service ensure that all occasions rise to the height of excellence.



GOLF

Two courses, designed by Robert Trent Jones II, offer world-class play in unforgettable surroundings. The 18-hole Atlantic Course, one of the highest rated in Europe, is famed throughout the world for the remains of a huge arched Roman aqueduct incorporated along the fairways fringes. Several holes offer dramatic views of the ocean and the ever-luminous Lisbon. The nine-hole Monastery Course, equally dramatic, owes its name to the unique hermitage built into the resort's rockscape by devout Franciscan friars in the 14th century.





EXPLORE

- Sintra, the castled fairyland whose 19th century Romantic architecture prompted its designation as a World Heritage Site by UNESCO
- Sintra-Cascais Nature Park, the enticingly verdant landscape nestled between the Atlantic Ocean and the Sintra hills
- Cabo da Roca, the westernmost point of continental Europe and a must-visit destination
- Convento dos Capuchos, an austere hermitage constructed in the nearby rockscape by Franciscan friars
- Cascais, where a relaxing cosmopolitan hospitality mixes with museums and the excitement of Casino Estoril
- Lisbon, Portugal's capital city, with beaches, countryside and a wealth of cultural, historical and entertainment offerings
- Mafra, the town whose National Palace is the extravaganza of King João V celebrating wealth from Brazil

INQUIRE

Penha Longa Hotel Spa & Golf Resort
Estrada da Lagoa Azul • Linhó, 2714 - 511 Sintra, Portugal
tel: 351-21-924-9011 fax: 351-21-924-9007
resort@penhalonga.com
www.penhalonga.com • www.ritzcarlton.com

